

February 2024 | Monthly Newsletter



MURIEL STEELE SOCIETY



FEB.

*Sponsored by the UCSF Department of Surgery*

Cover Art by Aileen Gozali (medical student)



## MURIEL STEELE SOCIETY

Happy February to all our Muriel Steele Society members!

We hope the new year has treated you well so far. Below you'll find updates, celebrations, and highlights of MSS members across specialties!



## New Spotlight: Dr. Patricia Loftus, MD

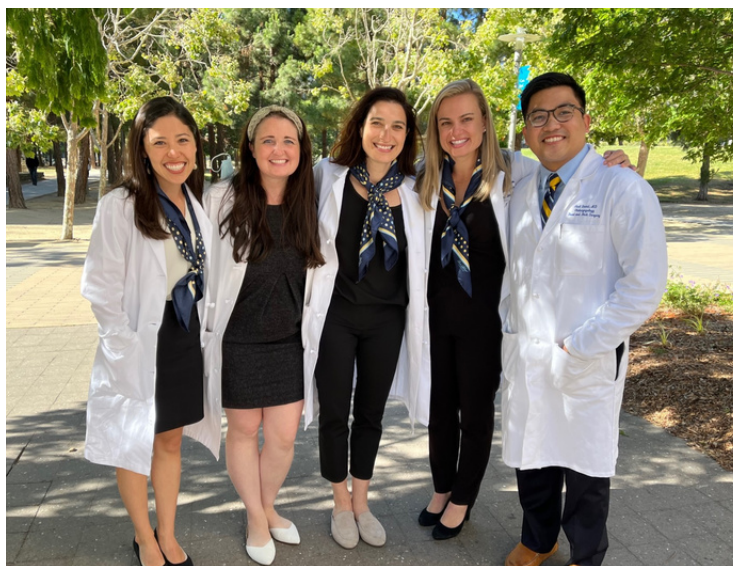


Dr. Patricia Loftus was recently interviewed by medical student Maria Lee about her surgical journey, advice for other female surgeons, and her inspirations. Dr. Loftus is an Associate Professor in the Department of Otolaryngology– Head and Neck Surgery at UCSF.

She completed a fellowship in Rhinology and Endoscopic Skull Base surgery at Emory University Hospital. Below is an excerpt from her spotlight that is **now live on the MSS website!**

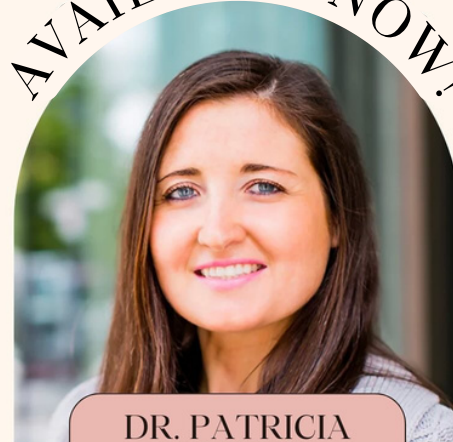


**“So that is what inspires me: the patients who I am privileged to help, and the students who remind me how lucky I am to do what I do and who allow me to show them that they can “do it all” as well.”**



THE MSS SPOTLIGHT SERIES

AVAILABLE NOW!



**DR. PATRICIA LOFTUS**

INTERVIEWED BY MARIA LEE

UCSF Muriel Steele Society  
Department of Surgery



## MURIEL STEELE SOCIETY



## February is Black History Month!



Each year, Black History Month has a specific theme that highlights different aspects of African American history and culture. For 2024, the theme is **"African Americans and the Arts"** spanning the many impacts Black Americans have had on visual arts, music, cultural movements, and more.

To celebrate this month, consider attending the **Museum of the African Diaspora** in SOMA! They have **free admission** to all exhibitions on the second Saturday of every month. And check out the flyer below for different Black owned businesses to support around the Bay this month!

## WE OUTSIDE!

EXPLORE BLACK SAN FRANCISCO BY VISITING THIS SELECT LIST OF BLACK-OWNED VENUES AND ACTIVITIES

Note: Establishments that are not Black-owned/Black-led are marked with an asterisk (\*)

### NIGHTLIFE + ENTERTAINMENT

**BLACK THURSDAY\*** Feb. 1 | 6 PM  
Enjoy an after-hours museum experience with live performances, conversations with Black Panther icons, vendors from in the Black marketplace, and more.

Reservations Required | \$30  
<https://www.calacademy.org/nightlife/nightlife-black-thursday>  
California Academy of Sciences (Golden Gate Park)

#### THE WIZ\*

San Francisco is the first stop for this all-new, Broadway-bound production of the timeless classic. Featuring Wayne Brady and Deborah Cox.

<https://www.broadwaysf.com/events/the-wiz/> Golden Gate Theater - 1 Taylor Street (Civic Center)

**READ BABY READ\*** Feb. 3 | 12-2 PM  
Dive into a day of stories, learning and fun for all ages!

Fillmore Heritage Center  
1330 Fillmore Street (Fillmore)

**ORIGIN FILM SCREENING\*** Feb. 3+4 | 3 PM

Join the SF Human Rights Commission for a free community screening of Ava DuVernay's latest film.

RSVP REQUIRED: <https://bit.ly/Origin-SF>  
AMC Kabuki 8 | 1881 Post Street (Japantown)

#### MISSION BOWLING CLUB

A retro bowling alley serving upscale comfort food fare. (21+ after 6:00 PM every day except Sunday)

<https://www.missionbowlingclub.com>  
3176 17th Street (Mission)

#### CHURCH OF 8 WHEELS

Public skate sessions and rental in a repurposed church.

<http://www.churchof8wheels.com>  
554 Fillmore (Fillmore)

### BARS + RESTAURANTS

#### BAYVIEW

#### GUMBO SOCIAL

Gumbo-forward creole and soul food 5176 3rd Street

#### RADIO AFRICA KITCHEN

Moroccan, Ethiopian 4800 3rd Street

#### SPEAKEASY ALES + LAGERS

Brewery 1195 Evans Ave

#### YVONNE'S SOUTHERN SWEETS

Bakery 5128 3rd Street

### FILLMORE/WESTERN ADDITION

#### SHEBA PIANO LOUNGE

Jazz club, Ethiopian-inspired menu 1419 Fillmore Street

#### CLUB WAZIEMA

Ethiopian food with a dance floor 543 Divisadero Street

#### MIYAKO OLD FASHIONED ICE CREAM

Ice cream shop 1470 Fillmore Street

### NOB HILL

#### PEACEKEEPER

Cocktail bar 1925 Bush Street

#### HARPER + RYE

Cocktail bar 1695 Polk Street

### FINANCIAL DISTRICT

#### TERANGA

Senegalese food 4 Embarcadero Center

#### INTERNATIONAL SMOKE

Upscale American/Soul fusion 301 Mission Street

#### LITTLE SKILLSET

New American food 360 Ritch Street

### BARS + RESTAURANTS (continued)

### MISSION

#### BISSAP BAOBAB

West African food, nightlife 2243 Mission Street

#### CAFE ETHIOPIA

Ethiopian 878 Valencia Street

### NORTH BEACH

#### DA FLORA

Italian 701 Columbus Ave

### SUNSET

#### NEW ERITREA RESTAURANT

Eritrean food 907 Irving Ave

#### SUNSET CANTINA

Mexican 3414 Judah Street

### RICHMOND

#### TASTEBUDS

Soul food cafe 600 5th Ave

#### BELLA TRATTORIA

Italian 3854 Geary Blvd

### DOGPATCH

#### UNGRAFTED

New American 2419 3rd Street

### TENDERLOIN

#### Z ZOUL CAFE

Sudanese 295 Eddy Street

#### HOUSE OF TADU ETHIOPIAN KITCHEN

Ethiopian 484 Ellis Street

### EMBARCADERO

#### QUEEN'S LOUISIANA PO BOY CAFE

Louisiana dishes Pier 35

#### PEACHES PATTIES

Jamaican 1 Ferry Bldg NA 50

### SOUTH OF MARKET (SOMA)

#### RIZE UP BAKERY

Bakery 1160 Howard Street

### COFFEE

#### RED BAY COFFEE

1 Ferry Bldg, Shop 43 (Embarcadero)

#### SEXTANT COFFEE

1415 Folsom Street (SoMa)

#### TARRAGON CAFE

200 Fillmore Street (Lower Haight)

#### TALLIO'S COFFEE + TEA

4732 3rd Street (Bayview)

### ARTS + CULTURE

#### MUSEUM OF THE AFRICAN DIASPORA

[moadsf.org](https://moadsf.org) 685 Mission Street (SoMa)

#### AFRICAN AMERICAN ARTS + CULTURE COMPLEX

[aaacc.org](https://aaacc.org) 762 Fulton Street (Fillmore)

#### JONATHAN CARVER MOORE

[jonathancarvermoore.com](https://jonathancarvermoore.com) 996 Market Street (Tenderloin)

#### JENKINS JOHNSON GALLERY

[jenkinsjohnsongallery.com](https://jenkinsjohnsongallery.com) 1275 Minnesota Street (Dogpatch)

### SHOPPING

#### IN THE BLACK MARKETPLACE

[intheblackshop.com](https://intheblackshop.com) | IG: @intheblackshop 1567 Fillmore Street (Fillmore)

#### RELOVE SAN FRANCISCO

[shoprelove.com](https://shoprelove.com) | IG: @shoprelove 1815 Polk Street (Pacific Heights)

#### TEXTURES VINTAGE

IG: @texturesvlg 269 Jefferson Street (Fisherman's Wharf)



MURIEL STEELE SOCIETY

Mark your Calendars!!!

## MSS and the Surgery Interest Group

### Spring 2024 Surgical Skills Workshop

This symposium is hosted by residents and senior medical students and serves as an orientation to the operating room, an opportunity to get hands-on practice in surgical skills such as gowning and gloving. It is also a chance to meet and learn from female surgical mentors!

If you are an MS1 interested in attending, please scan the QR code on the right to register!

And if you are an M3/M4 or resident interested in teaching please email [Alyssa.Murillo@ucsf.edu](mailto:Alyssa.Murillo@ucsf.edu) and [Caroline.Stephens@ucsf.edu](mailto:Caroline.Stephens@ucsf.edu)!

#### Event details:

Date: Sunday, 2/25/24

Time: 11 am - 1pm (lunch provided)

Location: Mission Bay

Attire: Blue UCSF scrubs



#### Event details:

Date: Friday, 3/1/24

Time: 8am - 5pm

Location: UCOP in Oakland



## Mark your Calendars!!! UC Wide Health Sciences Leadership Development Conference:

### 'Innovating the Future: Women Leaders as Catalysts for Change'

The inaugural UC Health Sciences Leadership Development Conference will be held in Oakland to bring together the UC Health community to share best practices, connect UC and national leaders, and discuss strategies to help drive change and innovation.

The event will consist of thematic and TED-type talks, breakout sessions, panel discussions, and workshops.

For more information, the conference agenda, and to register, please scan the QR code to the left!





MURIEL STEELE SOCIETY

Mark your Calendars!!!

## MSS Wellness Committee and Pancea: Managing Stress and Burnout Webinar

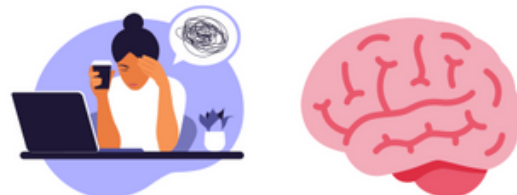
This webinar is hosted by the MSS Wellness Committee in collaboration with Pancea, a woman majority health tech group that is working to reimagine relief for chronic pain by providing on the go guidance and care.

What better way to kick off the new year than through this workshop that will touch on how to introduce practical self-care tips into your daily routine and how to spot early signs of burnout and reverse/manage its impact.

This session will be led by Dr. Sundas Pasha Fick, a licensed Clinical Psychologist. Check your emails for a flyer and scan the QR code on the right for the Zoom Link!



**Finding Balance: Stress Reduction  
Strategies for Healthcare Professionals**



### Event details:

Date: Wednesday, 2/21/24

Time: 6:30-7:30pm

Location: Zoom



## ASRM Conference Recap

In January, MSS members in the Division of Plastic and Reconstructive Surgery attended the American Society for Reconstructive Microsurgery Conference in the Bahamas!



Congratulations to all our colleagues who presented posters, moderated discussions, and had podium presentations!





MURIEL STEELE SOCIETY

## Highlight of Achievement



"The thing I've seen both domestically and internationally is that we do a lot of talking about people without talking to them," she said. "You're limited in how much impact you can make that way – the people you're trying to help and support have a ton of ideas because this is what they're living through."

Congratulations to MSS member, Dr. Marissa Boeck, for being awarded the 2023 Early Career Global Health Scientist Award by the UCSF Institute of Global Health Sciences!

Dr. Boeck is a trauma and critical care surgeon with research interests in understanding the underlying causes of gun violence and what social factors make it more common in some San Francisco neighborhoods than in others.



## Highlight of Achievement

Congratulations to MSS member, Dr. Emily Finlayson, and our colleague Dr. Wen Shen for being appointed the UCSF Fishbon Endowed Chairs in Ambulatory Surgery I and II!


Dr. Finlayson is a colorectal surgeon with expertise in the treatment of colon and rectal cancer, ulcerative colitis and Crohn's disease.

Dr. Shen is an endocrine surgeon who specializes in surgery of the thyroid, parathyroid and adrenal glands.




# Highlighting Research Excellence: MSS Members at the 19th Academic Surgical Congress in DC! ✨

Many of our MSS members will be showcasing their remarkable research at the upcoming 19th Annual Academic Surgical Congress in Washington, DC, from February 6-9. You can find all of UCSF's accepted works below. Follow along on our instagram to see when and where everyone will be presenting!



**Evaluating ChatGPT Versus Surgeon-Generated Informed Consents for Common Operations**



**Presenter:**  
**Hannah Decker, MD**  
General Surgery Resident

**Date:** Thursday, February 8th  
**Time:** 7:30 - 9:30 AM  
**Session:** 79  
**Room:** Columbia 6

**Authors:**  
H. C. Decker, K. Trang, J. Ramirez, A. Colley, L. Pierce, M. Coleman, T. Bongiovanni, G. B. Melton, E. Wick

**UCSF** Muriel Steele Society  
Department of Surgery



**Peritoneal Dialysis in a Safety Net Hospital: A Surgical Perspective**




**Presenter:**  
**Lara Senekjian, MD**  
Assistant Professor in Surgery


**Date:** Thursday, February 8th  
**Time:** 1:40 - 3:40 PM  
**Session:** 100  
**Room:** Columbia 6

**Authors:**  
E. Mirafior, L. Senekjian

**UCSF** Muriel Steele Society  
Department of Surgery



**Is Repeat CT Angiography for Asymptomatic Grade 1 Blunt Cerebrovascular Injury Cost Effective?**



**Presenter:**  
**Cynthia Susai, MD**  
General Surgery Resident

**Date:** Thursday, February 8th  
**Time:** 1:40 - 3:40 PM  
**Session:** 108  
**Room:** Lincoln West

**Authors:**  
C. J. Susai, N. J. Alcasid, A. E. Mendoza, L. Senekjian, G. P. Victorino

**UCSF** Muriel Steele Society  
Department of Surgery



**Intimate Partner Violence Screening in Limited English Proficiency Patients: Does Language Matter?**



**Presenter:**  
**Manami Diaz Tsuzuki, MS2**  
Department of Surgery

**Date:** Tuesday, February 6th  
**Time:** 7:30 - 9:30 AM  
**Session:** 16  
**Room:** Columbia 11

**Contributing Authors:**  
M. Diaz Tsuzuki, H. Decker, S. Shao, D. Kaki, J. Wang, M. Rosser, T. Bongiovanni

**UCSF** Muriel Steele Society  
Department of Surgery



**Identifying Gaps in Education for Post-Mastectomy Autologous Breast Reconstruction**




**Presenter:**  
**Aileen Gozali, MS4**  
Division of Plastic & Reconstructive Surgery


**Date:** Tuesday, February 6th  
**Time:** 7:30 - 9:30 AM  
**Session:** 12  
**Room:** Columbia 7

**Contributing Authors:**  
A. Gozali, D. Soroudi, J. A. Knox, J. Wilson, M. Piper

**UCSF** Muriel Steele Society  
Department of Surgery



**Association of Housing Status Changes with Cancer Outcomes in a National Sample of Veterans**



**Presenter:**  
**Hannah Decker, MD**  
Department of Surgery

**Date:** Wednesday, February 7th  
**Time:** 7:30 - 9:30 AM  
**Session:** 34  
**Room:** Columbia 5

**Contributing Authors:**  
H. C. Decker, L. Graham, A. Titan, M. Hawn, H. K. Kanzaria, M. Kushel, E. Wick

**UCSF** Muriel Steele Society  
Department of Surgery



### *Race and Operative Experience in General Surgery Residency Training: A Qualitative Review*



**Presenter:**  
**Nicole Panzica**  
Medical Student

**Authors:**  
N. Panzica, A. Cortez, K. Lynch,  
A. Gillis, B. Lindeman, H. Chen, J.  
Fazendin, P. Zmijewski

**UCSF** Muriel Steele Society  
Department of Surgery



### *Concerns with Crowdfunding for Solid Organ Transplant-Related Expenses*



**Presenter:**  
**Bethany Erb**  
Medical Student

**Authors:**  
B. M. Erb, H. Braun, C. J. Im, E.  
Nies, E. J. Gordan, C. Thiessen

**UCSF** Muriel Steele Society  
Department of Surgery



### *Shared Decision-Making Tool for Gender Affirming Mastectomy: Patient Satisfaction and Experience*



**Presenter: Nina**  
**Mehta, MS4**  
Division of Plastic &  
Reconstructive Surgery

**Contributing Authors:**  
N. R. Mehta, S. Song,  
M. McLaughlin, E. Kim

**UCSF** Muriel Steele Society  
Department of Surgery



### *Impact of adapting a surgical safety checklist training to a virtual platform in Ethiopia*



**Presenter:**  
**Maia Nofal, MD, MPH**  
General Surgery Resident

**Authors:**  
M. R. Nofal, T. Negussie Mammo, S.  
Taye Haile, N. Starr, M. Asrat, N.  
Gebeyehu, A. Tesfaye, H.  
Woldeamanuel, M. Daba, T. G. Welser

**UCSF** Muriel Steele Society  
Department of Surgery



### *Impact of the COVID-19 Pandemic on Surgical Trauma Case Rate Across Mexican States*



**Presenter:**  
**Taylor Wurdeman,**  
**MD, MPH**  
General Surgery Resident

**Authors:**  
T. Wurdeman, N. Kumar, A. Gerk, J.  
Bistre-Varon, S. Juran, A. Ramos-De  
La Medina, S. Klug, T. Dey, F. Vega-  
Rivera, T. Uribe-Leitz

**UCSF** Muriel Steele Society  
Department of Surgery



### *The Current State of Blood Availability in Mexico*



**Presenter:**  
**Nikathan Kumar, MD**  
Department of Surgery

**Contributing Authors:**  
N. S. Kumar, T. Wurdeman, A. Gerk, J.  
Bistre-Varon, A. Ramos-De La Medina, F.  
Vega-Rivera, T. Dey, S. Juran, T. Uribe-Leitz,  
N. Raykar

**UCSF** Muriel Steele Society  
Department of Surgery



### *Policy Implications of Variation in Surgical Volume Amidst COVID-19 in Mexico: A Specialty Analysis*



**Presenter:**  
**Taylor Wurdeman,**  
**MD, MPH**  
General Surgery Resident

**Authors:**  
J. Bistre-Varon, T. Wurdeman, L. Nunes  
Campos, M. S. Kumar, A. Gerk, T. Dey, A.  
Ramos-De La Medina, F. Vega-Rivera, S.  
J. Klug, S. Juran, T. UribeLeitz

**UCSF** Muriel Steele Society  
Department of Surgery



### *How to Build an Academic Powerhouse: Let's Study Who's Doing it*



**Presenter:**  
**Tejas Sathe, MD**  
Surgical Innovation  
Fellow

**Contributing Authors:**  
O. S. Sathe, T. S. Sathe

**UCSF** Muriel Steele Society  
Department of Surgery



### *Evaluation of ChatClinic's AI-Simulated Clinical Interactions Using LLMs and Human Experts*



**Presenter:**  
**Nathaniel Verhagen**  
Medical Student

**Authors:**  
N. B. Verhagen, N. Wolfrath, T. Sathe,  
M. Shah, K. Nimmer, C. Tomlin, J.  
Peschman, P. Murphy, S. Dream, A.  
Kothari

**UCSF** Muriel Steele Society  
Department of Surgery



### *Optimizing surgery for lobular breast cancer: rates of oncoplastic surgery and shave margins by BMI*



**PI: Rita Mukhtar,**  
**MD**  
Department of Surgery

**Contributing Authors:**  
I. O. Falade, K. M. Switalla, M. E.  
Baxter, A. Quirarte, H. Record,  
H. T. Rothschild, E. N. Clelland,  
R. A. Mukhtar

**UCSF** Muriel Steele Society  
Department of Surgery



### *Wound Care Strategies: Complexity in Online Patient Education Materials*



**PI: Esther Kim, MD**  
Division of Plastic &  
Reconstructive Surgery

**Contributing Authors:**  
I. O. Falade, J. Wilson,  
M. Mehari, D. Soroudi,  
S. Song, E. Kim

**UCSF** Muriel Steele Society  
Department of Surgery



### *Laparotomy Patient Outcomes at the National Referral Hospital in Dar es Salaam Tanzania*



**PI: Marissa Boeck,**  
**MD, MPH**  
Department of Surgery

**Contributing Authors:**  
R. Brand, L. Akoko, E. Obed, O.  
Miraftab-Salo, M.  
Boeck

**UCSF** Muriel Steele Society  
Department of Surgery



### Factors Contributing to Follow-up Loss for Traumatic Injury Survivors in the San Francisco Bay Area



**PI: Marissa Boeck, MD, MPH, FACS**  
Trauma Surgeon

**Authors:**  
J. C. Pang, C. R. Collins, J. Reid, L. Z. Chehab, A. R. Campbell, J. Cuschieri, A. Sammann, M. A. Boeck

**UCSF** Muriel Steele Society  
Department of Surgery



### The Clinical Significance of Penetrating and Blunt Trauma Following Temporary Abdominal Closure



**Contributing Author:**  
Carissa Villanueva, MD  
General Surgery Resident

**Authors:**  
N. J. Alcasid, C. Villanueva, E. Calabrese, C. J. Susal, E. Landry, A. E. Mendoza, T. D. Browder, G. P. Victorino

**UCSF** Muriel Steele Society  
Department of Surgery



### CRISPR/AAV Genome Editing Restores Hemoglobin Production in $\alpha$ -thalassemia Hematopoietic Stem Cells



**Contributing Author:**  
Tippi Mackenzie, MD  
Department of Surgery

**Contributing Authors:**  
S. N. Chu, E. Soupene, B. Wienert, H. Yin, D. Sharma, K. Jia, S. Homma, J. P. Hampton, B. R. Conklin, T. C. MacKenzie, M. Porteus, M. K. Cromer

**UCSF** Muriel Steele Society  
Department of Surgery



### Attitudes Toward Improving OR Sustainability: A Survey of U.S. Academic Surgeons



**Contributing Author:**  
Jane Wang, M.D.  
Department of Surgery

**Contributing Authors:**  
T. S. Sathya, J. J. Wang, K. Wang, A. Yap, P. O'Sullivan, H. Lee, S. Gaudin, G. Rolt, T. Sorrentino, A. Durcan, S. Ganai, V. S. Valdes, D. Napomnyashy, C. Zivanov, K. Ohman, B. Schexnayder, E. Onkendi, S. Rakhit, J. M. Blankush, Z. Whaley, T. J. Fahey, J. C. Hwang, D. M. Reles, A. Alseidi

**UCSF** Muriel Steele Society  
Department of Surgery



### The Antibiotic Timeout: a quality improvement program to reduce postsurgical antibiotics in Ethiopia



**Contributing Author:**  
Nichole Starr, MD  
Department of Surgery

**Contributing Authors:**  
M. R. Nofal, A. Tesfaye, N. Gebeyehu, M. Negash Mawesha, I. Hayredin, B. Getahun, N. Starr, Y. Sebsibhe, S. Bitew Alemu, T. Negussie Mammo, T. G. Weiser

**UCSF** Muriel Steele Society  
Department of Surgery



### Language Serving Hospitals Have Fewer Readmissions for Patients with Non-English Primary Language



**Contributing Author:**  
Alicia Fernandez, MD

**Contributing Authors:**  
B. M. Dacier, B. G. Allar, A. N. Jones, B. S. Torres, N. L. Magana, A. Rahimi, R. W. Bergmark, A. Fernandez, D. W. Bates, G. L. Peck, G. Ortega

**UCSF** Muriel Steele Society  
Department of Surgery



### Uncovering Distinctions Between the Regenerative and Fibrotic Programs of the Oral Mucosa and Skin



**Contributing Author:**  
Jessica Cook

**Contributing Authors:**  
M. Griffin, J. Cook, D. Boffelli, R. Zwick, D. Wan, O. Klein, M. Longaker

**UCSF** Muriel Steele Society  
Department of Surgery



### Social Vulnerability Impacts Postoperative Delirium Following Open Abdominal Aortic Aneurysm Repair



**Contributing Author:**  
Emily Finlayson, M.D.  
Department of Surgery

**Contributing Authors:**  
R. D. Gutierrez, E. J. Smith, Z. A. Matthay, W. J. Gasper, L. C. Walter, E. Finlayson, M. S. Conte, J. C. Iannuzzi

**UCSF** Muriel Steele Society  
Department of Surgery



### Sociodemographic and Clinical Risk Factors for Chemical Restraint Use among Adult Trauma Patients



**Contributing Author:**  
Rochelle Dicker, MD  
Department of Surgery

**Contributing Authors:**  
J. M. Rook, A. Hayashi, D. Salinas, Y. Abbey, D. Carrera, R. Dicker, C. Juillard

**UCSF** Muriel Steele Society  
Department of Surgery



### Esophageal Cancer Staging in Malawi: Feasibility of Routine Imaging in Patients Undergoing Endoscopy



**Contributing Author:**  
Geoffrey Buckle, MD MPH

**Contributing Authors:**  
B. M. Williams, B. Kaimila (Posthumously), G. Mulima, K. D. Marape, A. W. Salima, A. Evans, N. Ngwira, C. Kajombo, J. Gallaher, A. G. Charles, G. Buckle, K. McGinty, G. N. Mody

**UCSF** Muriel Steele Society  
Department of Surgery



### Pediatric Firearm Injury and State Firearm Prevalence in Mexico: A National Analysis



**Contributing Author:**  
Nikethan Kumar, MD  
Department of Surgery

**Contributing Authors:**  
A. Gerk, T. Wurderman, N. Kumar, S. Hargarten, T. Dey, A. Cervantes-Trejo, J. Lindsay-Poland, S. Story, F. Vega-Rivera, J. Shalkow, S. Juran, T. Uribe-Leitz

**UCSF** Muriel Steele Society  
Department of Surgery



### Training Local Birth Attendants in Diagnosis and Early Management of Congenital Anomalies in Uganda



**Contributing Author:**  
Doruk Ozgediz, MD, MSc  
Department of Surgery

**Contributing Authors:**  
S. Trinidad, P. Kayima, M. Ogwang, S. Ojara, K. Phyllis, M. Kotagal, D. Ozgediz

**UCSF** Muriel Steele Society  
Department of Surgery

**Thanks for reading!**

**MSS Communications Committee:**

Resident Leads: Alexis Colley, Fernanda Romero-Hernandez

Medical Student Lead: Aileen Gozali

Newsletter: Reta Behnam, Allison Chang

Social Media: Rachel Huynh, Nikki Mahendru, Reta Behnam

If you have anything you would like to feature (articles, advice, work photos/achievements, family/personal photos/achievements, etc) in this new section of our newsletters, please send an email to [themurielsteelesociety@ucsf.edu](mailto:themurielsteelesociety@ucsf.edu).

**For more information about the Muriel Steele Society**, please visit our website or follow us on Twitter.

**Have an opportunity or event that you'd like to share with the MSS membership?** Email us at [themurielsteelesociety@ucsf.edu](mailto:themurielsteelesociety@ucsf.edu).



MURIEL STEELE SOCIETY